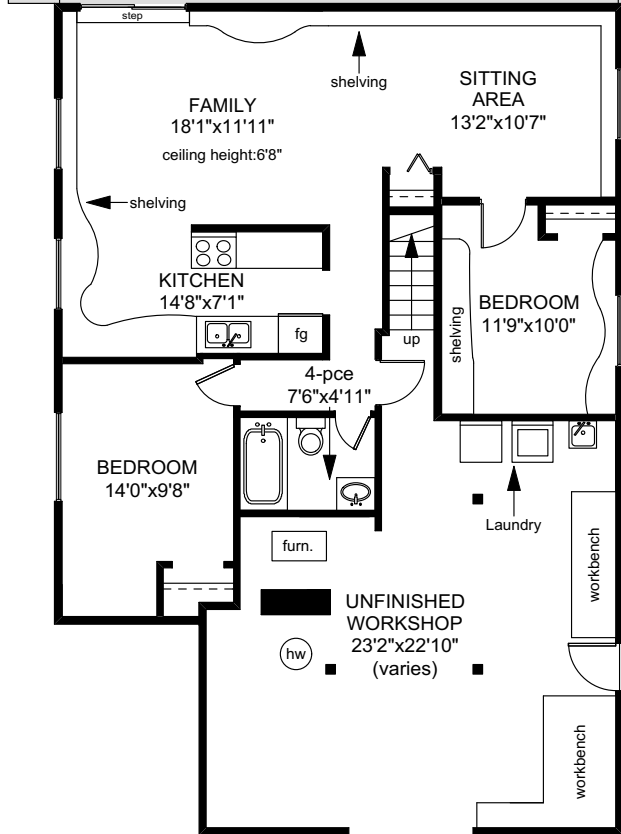
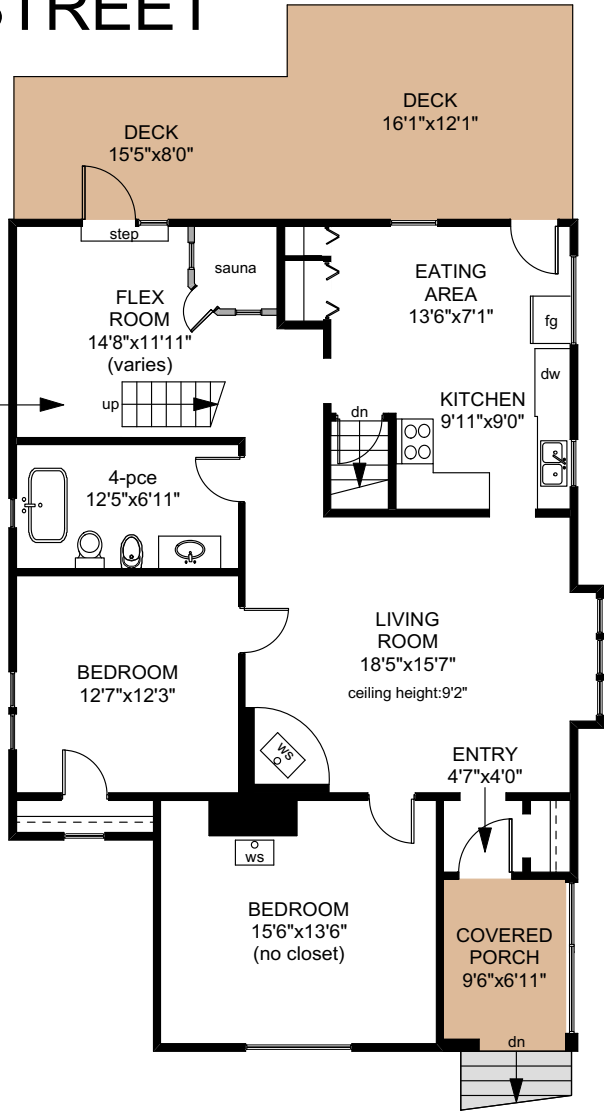
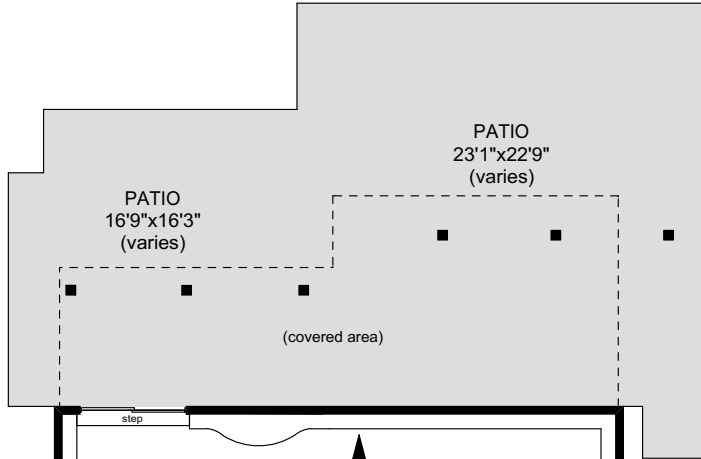


1247 LYALL STREET

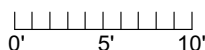
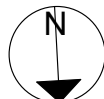
MAIN FLOOR
1347 SQ.FT

up to
attic space
(vaulted ceiling height 7'7")



LOWER FLOOR
1409 SQ.FT

	FINISHED SQ. FT.	UNFINISHED SQ. FT.	TOTAL SQ. FT.
MAIN	1347	0	1347
LOWER	894	515	1409
TOTAL	2241	515	2756
PORCH	0	66	66
DECK	0	318	318
PATIO	0	800	800



PREPARED FOR THE EXCLUSIVE USE OF
THE NEAL ESTATE TEAM OF RE/MAX ALLIANCE

MEASURED ON: 10/16/18
DRAWING FILE: 17152

Tafmeasure VICTORIA, B.C.
Ph. 883.8894
www.tafmeasure.com